

SPARE PARTS SECTION

CYCLONE DUST COLLECTOR

Model. SB-C870

Order Code S310

Edition No : SB-C870-1

Date of Issue : 10/2022

The following section covers the spare parts diagrams and lists that were current at the time this manual was originally printed. Due to continuous improvements of the machine, changes may be made at any time without notification.

HOW TO ORDER SPARE PARTS

1. Have your machines model number, serial number & date of manufacture on hand, these can be found on the specification plate mounted on the machine
2. A scanned copy of your parts list/diagram with required spare part/s identified.

NOTE: SOME PARTS MAY ONLY BE AVAILABLE AS AN ASSEMBLY

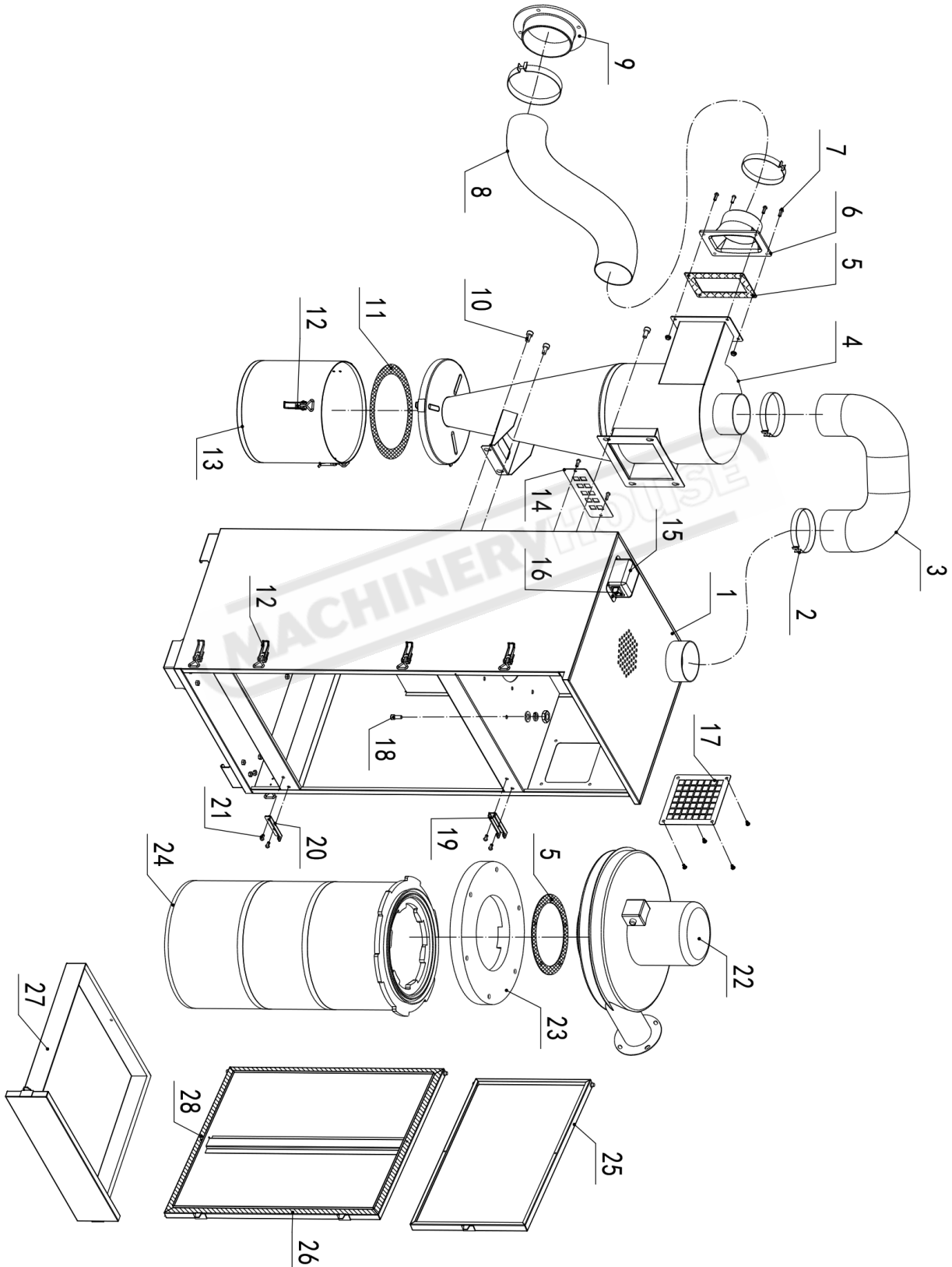
3. Go to www.machineryhouse.com.au/contactus and fill out the inquiry form attaching a copy of scanned parts list.



WARNING.

Compressed Air is Dangerous and can cause Death or Injury if misused. Always bleed off the airline before disconnecting from the compressor or machine. DO NOT use compressed air to blow dust from clothes

SPARE PARTS DIAGRAM



SPARE PARTS LIST

Item	DESCRIPTION	Qty	Item	DESCRIPTION	Qty
1	Cabinet Assembly	1	16	Switch	1
2	Clamp	4	17	Cover of the air outlet	1
3	Exhaust pipe Ø101x750mm	1	18	M8x20 hexagon socket head cap screw	11
4	Cyclone separator	1	19	Hinged support for the upper door	1
5	Sealing cotton 3MM	1	20	Hinged support for the lower door	1
6	Air vent seat	1	21	M6x12 hexagon socket head cap screw	4
7	M6X16 round head screw	4	22	Motor	1
8	Exhaust pipe Ø101x1500mm	1	23	Fixture for filter	1
9	Flange	1	24	Filter	1
10	M6x10 hexagon socket head cap screw	6	25	Upper Door	1
11	Sealing cotton 6MM	1	26	Lower Door	1
12	Latch	8	27	Drawer Assembly	1
13	Container for dust	1	28	Rubber Sealing Strip	1
14	Back Cover	1			
15	Switch Box	1			

NOTE: SOME INDIVIDUAL PARTS MAY ONLY BE AVAILABLE AS AN ASSEMBLY



WARNING

Always disconnect the power to the machine before servicing or doing maintenance to the machine.



WARNING

The machine is the sole responsibility of the owner for its safe use. This responsibility includes but is not limited to proper installation in a safe environment, personnel training, proper inspection and maintenance, manual availability and comprehension. The manufacturer will not be held liable for injury or property damage from negligence, improper training, machine modifications or misuse.